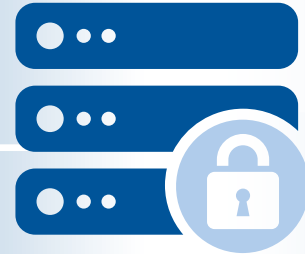


## Lumidigm® Secure Line Secure Integration Kit



### Markets

- Banking
- Education
- Finance
- Gaming
- Government
- Healthcare
- Hospitality
- Retail
- Transportation

### HID SECURE ENDPOINTS - STOPPING CYBER THREATS AND BREACHES

- **Protect Your Data Assets** - Prevent cyber criminals from gaining unauthorized access to your networks and intellectual property
- **Protect Your Brand** - Prevent brand damage and lost customers from public and humiliating data breaches
- **Protect Your Profits** - Prevent financial loss from theft, ransom and reparations to third parties
- **Protect Your Business** - Prevent downed networks resulting in expensive recovery costs, lost productivity and lost revenues

You need a means to protect the transmission of sensitive and confidential information. Cryptography is the key to secure transactions by ensuring data confidentiality, data integrity, user authentication and non-repudiation. Without a secure endpoint, cyber criminals could steal data, alter data and gain access to your networks.

By supporting key management and today's most popular cipher

algorithms the HID Secure Integration Kit makes safe electronic transmissions possible. The HID Secure Integration Kit turns your biometric reader into a secure endpoint. All the data transmitted between the biometric reader and your network is encrypted ensuring the security of your transactions. The HID Secure Integration Kit allows you to have confidence in your electronic transactions.



# SPECIFICATIONS



<b>Fingerprint Readers</b>	V420-NC-01	V421-NC-01	M420-NC-01	M421-NC-01
<b>Integration Kit</b>	V42X-SW-HYB02		M42X-SW-HYB02	

### BIOMETRIC FUNCTIONS

<b>Technology</b>	HID Patented Lumidigm® Multispectral Imaging (MSI)
<b>Template Extractor and Matcher</b>	MINEX III certified
<b>Output Image Resolution / Bit Depth</b>	500 dpi / 8-bit, 256 grayscale
<b>Image Output Format</b>	Uncompressed or WSQ compressed images (FBI Certified)
<b>Template Output Format</b>	ANSI 378 / ISO 19794-2 / ISO-19784 (MINEX III certified)
<b>Match-on-Device</b>	ANSI 378 / ISO 19794-2 Template Inputs
<b>Image Acquisition</b>	Structured Image Acquisition (SIA) for Enhanced Speed, Ambient Light Rejection, and Finger Position Qualification

### SECURITY FEATURES

<b>Presentation Attack Detection (PAD) / Live Finger Detection (LFD)</b>	ISO/IEC 30107-3, Level 1 Presentation Attack Detection (PAD) certified Multispectral Imaging (MSI), Live Finger Detection (LFD)
<b>Physical Tamper Protection</b>	Encrypted firmware updates Secure element with active key erase
<b>Cryptography</b>	AES 128/256, TDES 2/3 Key, SHA-256, RSA-2048
<b>Number of user symmetric keys</b>	10
<b>Unique Static ID</b>	64 Bit
<b>Deterministic Random Bit Generator (DRBG)</b>	NIST CAVP Certified

### TRANSACTION MODEL SUPPORT

<b>Factory Key Injection</b>	Supported
<b>Master/Slave Session</b>	
<b>Remote Key Load (RKL)</b>	

### INTERFACE

<b>USB</b>	USB 2.0 high speed (480 Mbps)
<b>Operating Systems</b>	Windows 7/10; Linux x86/x64

### CERTIFICATIONS

FIPS 140-2 CAVP Certifications; FBI Certified WSQ Compression; ISO/IEC 30107-3 Presentation Attack Detection Level 1; MINEX III

The following cryptographic algorithms are compliant and registered with the NIST CAVP (Cryptographic Algorithm Validation Program).  
<https://csrc.nist.gov/projects/cryptographic-algorithm-validation-program>

Cipher Algorithm	Description	Document	CAVP Validation Number
<b>AES</b>	<b>Advanced Encryption Standard</b> Modes: ECB, CBC, CTR, GCM, CMAC / Key Sizes 128, 192, 256 bits	FIPS 197 SP800-38A	#3970
<b>TDES</b>	<b>Triple-DES (TDES/DES)</b> Modes: ECB, CBC / 2 and 3 Key TDES	SP800-67 SP800-38A	#2177
<b>SHS</b>	<b>Secure Hash Standard</b> SHA (1, 224, 256, 384, 512)	FIPS 180-4	#3273
<b>DRBG</b>	<b>Deterministic Random Bit Generator</b> AES Block Cipher Counter Mode (CTR DRBG) Prediction Resistance Enabled Independent Dual Hardware RBG Entropy Sources	SP800-90A	#2587
<b>RSA</b>	<b>Rivest Shamir Adleman</b> Key Sizes 1024b, 2048b, 3072b PKCS #1 V1.5 KEY (Gen), RSA Sig (Ver)(1024), RSA (Gen, Ver) (2048 3072), SHA (1,224,256,384,512)	FIPS 186-3	#2029

North America: +1 512 776 9000  
Toll Free: 1 800 237 7769  
Europe, Middle East, Africa:  
+44 1440 714 850  
Asia Pacific: +852 3160 9800  
Latin America: +52 55 9171 1108

An ASSA ABLOY Group brand

hidglobal.com



For Lumidigm inquiries: [lumidigm@hidglobal.com](mailto:lumidigm@hidglobal.com)

© 2020 HID Global Corporation/ASSA ABLOY AB. All rights reserved. HID, HID Global, the HID Blue Brick logo, the Chain Design and Lumidigm are trademarks or registered trademarks of HID Global or its licensor(s)/supplier(s) in the US and other countries and may not be used without permission. All other trademarks, service marks, and product or service names are trademarks or registered trademarks of their respective owners.  
2020-06-04-eat-lumidigm-secure-int-kit-ds-en PLT-05089

ASSA ABLOY